

Simplex Basket Strainer

Carbon Steel ANSI 150# RF



XSC-BSW Series

Size: 2" to 24"

Body: Cast Steel

Screen: 304 Stainless Steel (Refer to options)

Pressure Range: Up to 20 BAR

Connections: ANSI 150# RF

Factory Accredited CE, ISO 9001

The XSC-BSW Series Simplex Basket Strainer is very basic and cost-effective unit. Designed to ANSI B16.34 with flanges to ANSI B16.5 and tested in accordance with API 598.

Model	DN (mm)	Pressure Range	Media Temp	Weight (kg)	Plug Size	Mesh Size (mm)
XSC-BSW-050	50	0 to 20 BAR	0 to 180°C	17.5	½"	Refer to List
XSC-BSW-065	65	0 to 20 BAR	0 to 180°C	21	½"	Refer to List
XSC-BSW-080	80	0 to 20 BAR	0 to 180°C	28	½"	Refer to List
XSC-BSW-100	100	0 to 20 BAR	0 to 180°C	39.5	½"	Refer to List
XSC-BSW-125	125	0 to 20 BAR	0 to 180°C		½"	Refer to List
XSC-BSW-150	150	0 to 20 BAR	0 to 180°C	64.5	½"	Refer to List
XSC-BSW-200	200	0 to 20 BAR	0 to 180°C	91	½"	Refer to List
XSC-BSW-250	250	0 to 20 BAR	0 to 180°C	133	½"	Refer to List
XSC-BSW-300	300	0 to 20 BAR	0 to 180°C	169	1"	Refer to List
XSC-BSW-400	400	0 to 20 BAR	0 to 180°C	285	1"	Refer to List
XSC-BSW-500	500	0 to 20 BAR	0 to 180°C	440	1"	Refer to List
XSC-BSW-600	600	0 to 20 BAR	0 to 180°C	560	1"	Refer to List

Refer to Page 3 for Screen Aperture Options



Dimensions

Materials



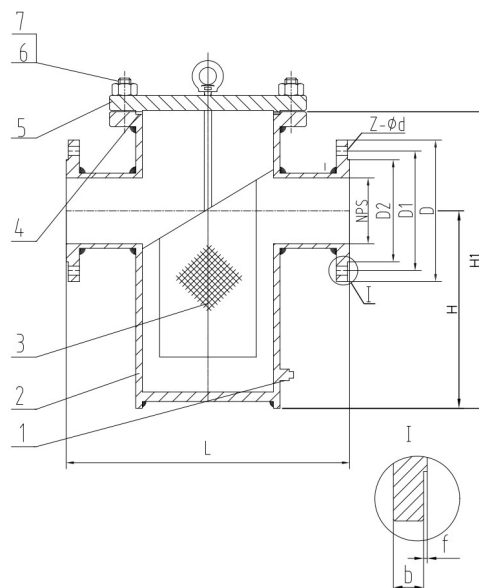
Screen Options

Unless otherwise quoted, strainers are supplied with standard screen as listed.

Monarch fabricates a wide variety of spare & replacement screens. Please refer to screen options attached.

Please note:

Clean Differential Pressure may change due a change in screen aperture size.



DN	L	H	H1	D	D1	D2	b	f	z-ød
50	270	175	300	150	120.7	92.1	14.3	2	4-19
65	330	210	360	180	139.7	104.8	15.9	2	4-19
80	340	255	400	190	152.4	127	17.5	2	4-19
100	430	300	470	230	190.5	157.2	22.3	2	8-19
125	480	355	550	255	215.9	185.7	22.3	2	8-22
150	500	425	630	280	241.3	215.9	23.9	2	8-22
200	560	500	780	345	298.5	269.9	27	2	8-22
250	660	500	889	405	362	323.8	28.6	2	12-26
300	750	500	785	485	431.8	381	30.2	2	12-26
350	800	550	865	535	476.3	412.8	33.4	2	12-29
400	900	630	980	595	539.8	469.9	35	2	16-29
450	950	820	1200	635	577.9	533.4	38.1	2	16-32
500	1000	850	1240	700	635	584.2	41.3	2	20-32
600	1150	900	1360	815	749.3	692.2	46.1	2	20-35

1	Plug Fitting	ASTM A105
2	Body	ASTM A105
3	Filter Screen	SS304
4	Gasket	Flexible Graphite / 304
5	Bonnet	ASTM A105
6	Bonnet Bolt Nut	ASTM A194 Gr.2H
7	Bonnet Bolt	ASTM A193 Gr.B7

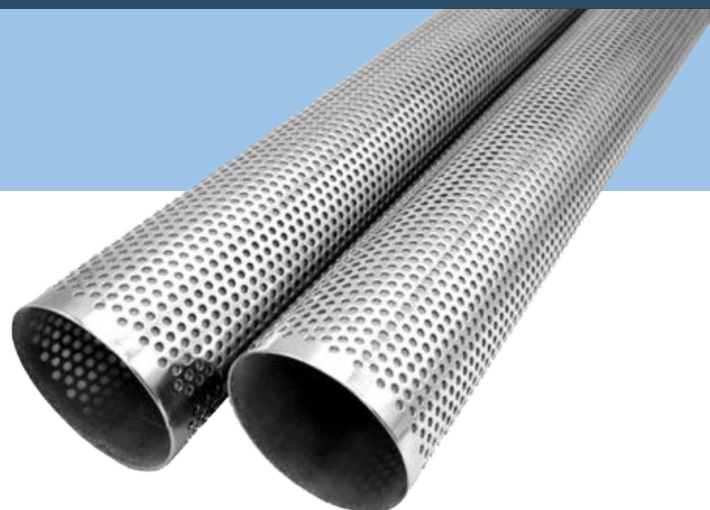
Screen Size Options

Perforated 304 Stainless

0.5mm perforations
 0.8mm perforations
 1.0mm perforations
 1.5mm perforations
 2mm perforations
 3mm perforations
 4mm perforations
 5mm perforations
 6mm perforations
 8mm perforations
 10mm perforation
 12mm perforations

Perforated 316 Stainless

0.8mm perforations
 1.1mm perforations
 1.5mm perforations
 2mm perforations
 3mm perforations
 4mm perforations
 5mm perforations
 10mm perforation



Woven Wire Mesh (316)

900 Micron
 810 Micron
 530 Micron
 415 Micron
 310 Micron
 260 Micron
 210 Micron
 190 Micron
 150 Micron
 130 Micron
 100 Micron
 80 Micron

Hollander Weave Mesh (316)

(5/14) 5 Micron Nominal, 14 Micron Absolute
 (10/18) 10 Micron Nominal, 18 Micron Absolute
 (15/26) 15 Micron Nominal, 26 Micron Absolute
 (25/38) 25 Micron Nominal, 38 Micron Absolute
 (35/45) 35 Micron Nominal, 45 Micron Absolute

Please note: Suitability of screen sizes will depend on Body Size, Flow rate and Viscosity.

Please contact our sales team for sizes not listed.