

## Simplex Basket Strainer

### Cast Iron Table E

#### BSCI Series

Size: 2" to 24"

Body: FBE Coated Cast Iron

Screen: 304 Stainless Steel (Refer to options)

Pressure Range: Up to 16BAR

Connections: AS2129 Table E / AS4087 PN16

Factory Accredited CE, ISO 9001, TUV, WRAS



Fusion Bonded Epoxy Coated Cast Iron Basket Strainer  
 Flanged to Table E with Stainless Steel Basket.

All fixings and plugs are 304 Stainless Steel to resist corrosion. These Cast Iron Basket Strainers are tested in accordance with API 598.

Model	DN (mm)	Pressure Range	Media Temp	Weight (kg)	Plug Size	Mesh Size (mm)
BSCI-050	50	0 to 16 BAR	0 to 80°C	11	½"	Refer to List
BSCI-065	65	0 to 16 BAR	0 to 80°C	19	¾"	Refer to List
BSCI-080	80	0 to 16 BAR	0 to 80°C	21	¾"	Refer to List
BSCI-100	100	0 to 16 BAR	0 to 80°C	33	1"	Refer to List
BSCI-125	125	0 to 16 BAR	0 to 80°C	43	1"	Refer to List
BSCI-150	150	0 to 16 BAR	0 to 80°C	60	1"	Refer to List
BSCI-200	200	0 to 16 BAR	0 to 80°C	100	1 ½"	Refer to List
BSCI-250	250	0 to 16 BAR	0 to 80°C	151	1 ½"	Refer to List
BSCI-300	300	0 to 16 BAR	0 to 80°C	270	2"	Refer to List
BSCI-350	350	0 to 16 BAR	0 to 80°C	450	2"	Refer to List
BSCI-400	400	0 to 16 BAR	0 to 80°C	500	2"	Refer to List
BSCI-450	450	0 to 16 BAR	0 to 80°C	643	2"	Refer to List
BSCI-500	500	0 to 16 BAR	0 to 80°C	850	2"	Refer to List
BSCI-600	600	0 to 16 BAR	0 to 80°C	1250	2"	Refer to List

Refer to Page 3 for Screen Aperture Options



## Dimensions

## Materials



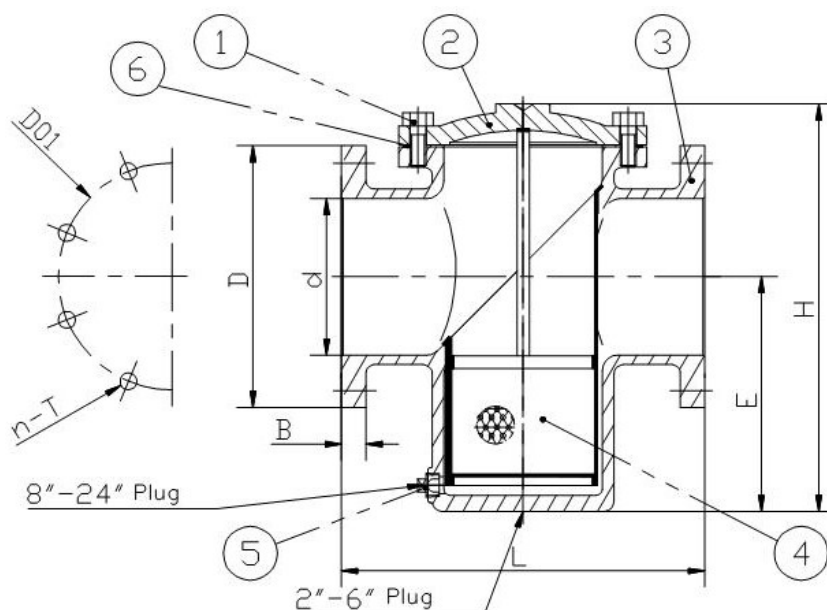
### Screen Options

Unless otherwise quoted, strainers are supplied with standard screen as listed.

Monarch fabricates a wide variety of spare & replacement screens. Please refer to screen options attached.

### Please note:

Clean Differential Pressure may change due a change in screen aperture size.



DN	L	B	D	D0	N-T	d	E	H
50	206.2	19	150	114	4-18	50	132.5	223
65	210	19	165	127	4-18	65	155.5	248
80	250.8	19	185	146	4-18	80	186	295
100	292.1	22	215	178	8-18	100	203	332
125	333.8	22	255	210	8-18	125	213	368
150	337.8	22	280	235	8-22	150	235	400
200	474.6	26	335	292	8-22	200	295	507
250	511	28	405	356	12-22	250	340	662
300	680	29	455	406	12-25	300	404	762
350	768.4	26.5	520	470	16-28	350	585	TBA
400	841.4	28	580	525	16-31	400	533	TBA
450	841.4	30	640	585	20-31	450	535	TBA
500	841.4	31.5	715	650	20-34	500	591	TBA
600	1054	36	840	770	20-37	600	760	TBA

Number	Part	Material
1	Bolt	304 SS
2	Bonnet	Ductile Iron
3	Body	Ductile Iron
4	Screen	304 SS
5	Plug	304 SS
6	Gasket	Graphite + Steel

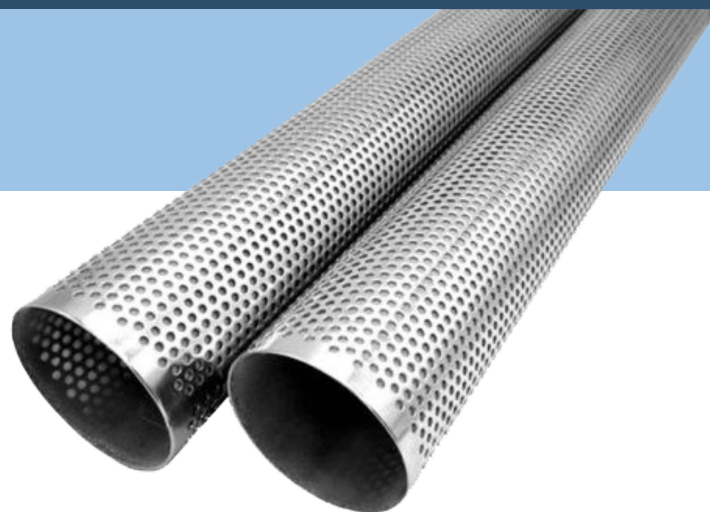
## Screen Size Options

### Perforated 304 Stainless

0.5mm perforations  
 0.8mm perforations  
 1.0mm perforations  
 1.5mm perforations  
 2mm perforations  
 3mm perforations  
 4mm perforations  
 5mm perforations  
 6mm perforations  
 8mm perforations  
 10mm perforation  
 12mm perforations

### Perforated 316 Stainless

0.8mm perforations  
 1.1mm perforations  
 1.5mm perforations  
 2mm perforations  
 3mm perforations  
 4mm perforations  
 5mm perforations  
 10mm perforation



### Woven Wire Mesh (316)

900 Micron  
 810 Micron  
 530 Micron  
 415 Micron  
 310 Micron  
 260 Micron  
 210 Micron  
 190 Micron  
 150 Micron  
 130 Micron  
 100 Micron  
 80 Micron

### Hollander Weave Mesh (316)

(5/14) 5 Micron Nominal, 14 Micron Absolute  
 (10/18) 10 Micron Nominal, 18 Micron Absolute  
 (15/26) 15 Micron Nominal, 26 Micron Absolute  
 (25/38) 25 Micron Nominal, 38 Micron Absolute  
 (35/45) 35 Micron Nominal, 45 Micron Absolute

**Please note:** Suitability of screen sizes will depend on Body Size, Flow rate and Viscosity.

Please contact our sales team for sizes not listed.