

<b>Flange information</b>  Flange Size Flange Type (e.g. ANSI) Flange Rating (e.g. 150#)	<b>Removal Size (Micron or MM)</b>  
<b>Flange Finish</b>  120 Grit sanding disc (Standard) Machined serrated spiral Machined concentric	<b>Material</b>  304 Stainless Steel 316 Stainless Steel 316L Stainless Steel
<b>Flow Direction (see drawing)</b>  Direction A Direction B	<b>Are Material Certificates required?</b>  No Yes
<b>Open Area Ratio to Nominal Pipe Area (O.A.R.)</b>  >100% open or free area >150% open or free area >200% open or free area >250% open or free area >300% open or free area  Please confirm using custom dimensions provided or Refer to - Dimensions Option 1	<b>Number of units required?</b>  Qty  <b>Notes</b>  

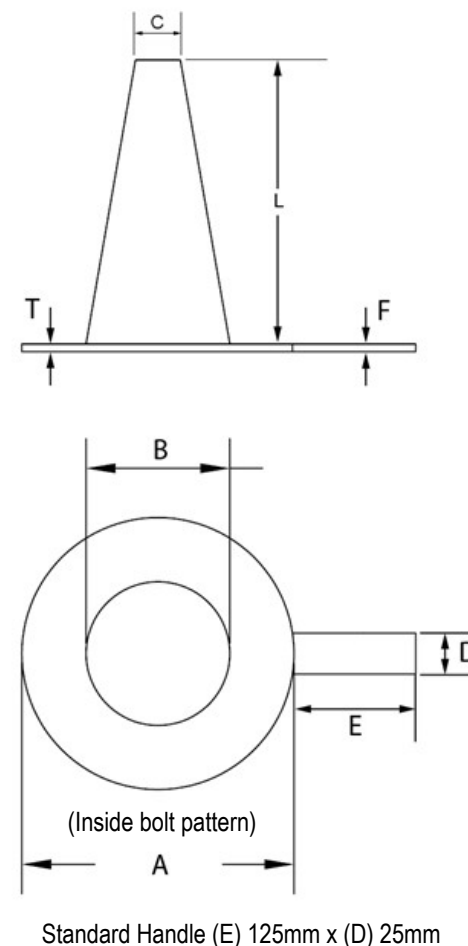
**MONARCH**  
INDUSTRIAL PRODUCTS

Truncated Cone

www.monarchindustrial.com.au

Phone: 07 3889 9949

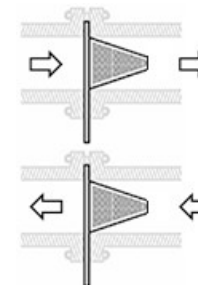
<b>Contact Name:</b>	
<b>Company:</b>	
<b>Email:</b>	
<b>Phone:</b>	



**Flow Direction**

**Direction A**  
(Inside to Outside)

**Direction A**  
(Outside to Inside)



### Dimensions

*Option 1: to be completed by customer or*  
*Option 2: to be completed by Monarch*

#### Option 1: Custom Dimensions

To be completed by <u>Customer</u>	<b>A</b>	mm
	<b>B</b>	mm
	<b>C</b>	mm
	<b>L</b>	mm
	<b>T</b>	mm
	<b>F</b>	mm
	<b>E</b>	mm
	<b>D</b>	mm
(T) Standard is 3mm		

or

#### Option 2: Dimensions as calculated

To be completed by <u>Monarch</u>	<b>A</b>	mm
	<b>B</b>	mm
	<b>C</b>	mm
	<b>L</b>	mm
	<b>T</b>	mm
	<b>F</b>	mm
	<b>E</b>	mm
	<b>D</b>	mm

#### Monarch Ref Information

Document:	REF-0010-T-Cone
Date:	
Quote Ref.	
Dwg No.	