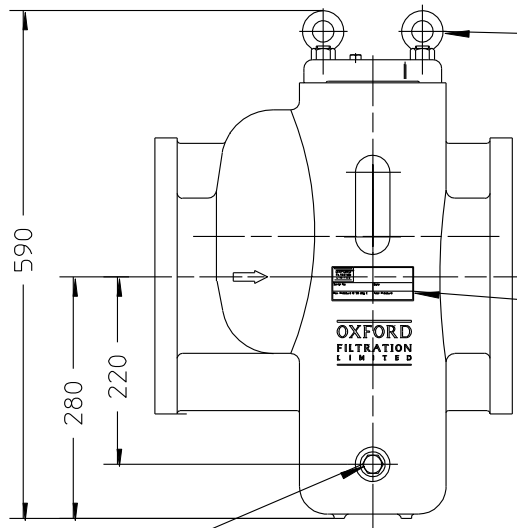


COVER MAY SWING
TO REMOVE ELEMENT

BLEED SCREW

SPACE TO REMOVE ELEMENT

EYE NUTS FITTED
AS STANDARD
HEX NUTS OR
HAND-NUTS
OPTIONAL



PRESSURE TEST
INFORMATION LABEL

1/2" DRAIN MAY
BE ON OTHER SIDE

FLANGE TYPE	
REQUIREMENTS	
P.C.D OF HOLES	
DIA OF R/F	
R/F THICKNESS	
NO OF HOLES	
DIA OF HOLES	

ELEMENT AREA	-	2038cm ²
WEIGHT OF FILTER	-	81 kg
MAX WORKING PRESSURE	-	16 bar * SEE CAST IRON NOTE
TEST PRESSURE	-	24 bar

* NOTE CAST IRON WORKING PRESSURE
IS LIMITED TO 13.8 BARG

ALL DIMENSIONS NOMINAL

UNLESS SPECIFIED GENERAL TOLERANCE 0 DEC PLACE +/- 1 1 DEC PLACE +/- 0.4 2 DEC PLACE +/- 1.0 ANGULAR +/- 2 Deg	APPROVED	MATERIAL	DESCRIPTION GENERAL ARRANGEMENT DN150 Fig Single Filter		
	DRAWN A.S.N.				
MODIFICATION CAST IRON NOTE ADDED	DATE 10/3/04	C 2004 This drawing and the design is the property of OXFORD FILTRATION LIMITED and may not be copied or used for any purpose other than that for which it was supplied unless expressly stated in writing		DRG NO. 12325	ISS 2