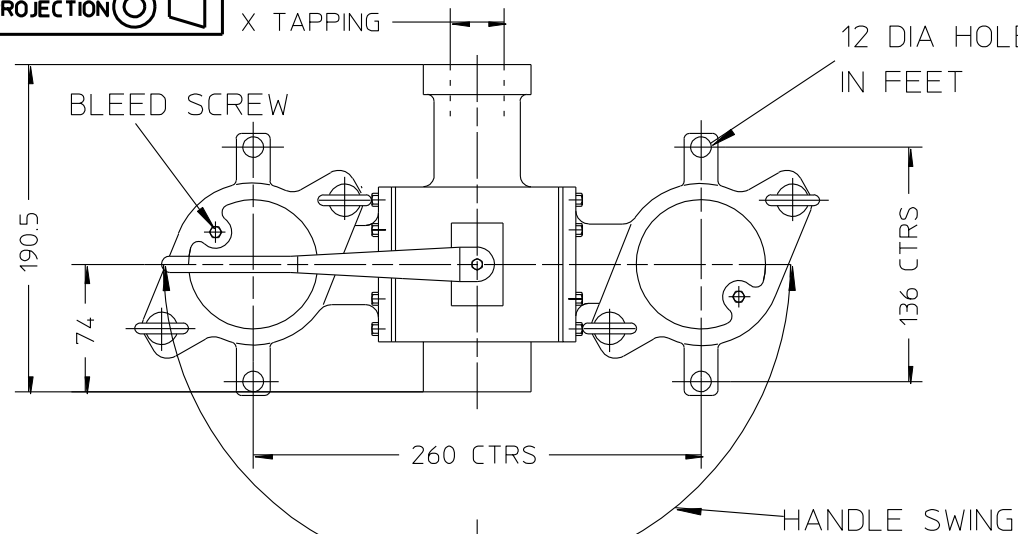


PROJECTION

X TAPPING

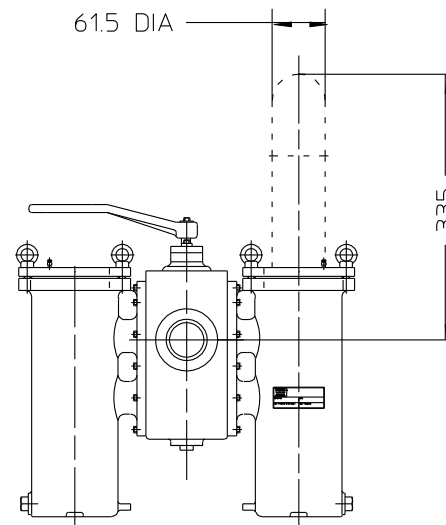
12 DIA HOLE
IN FEET

BLEED SCREW



61.5 DIA

335



SPACE TO REMOVE ELEMENT

X
TAPPING

NOTE:-

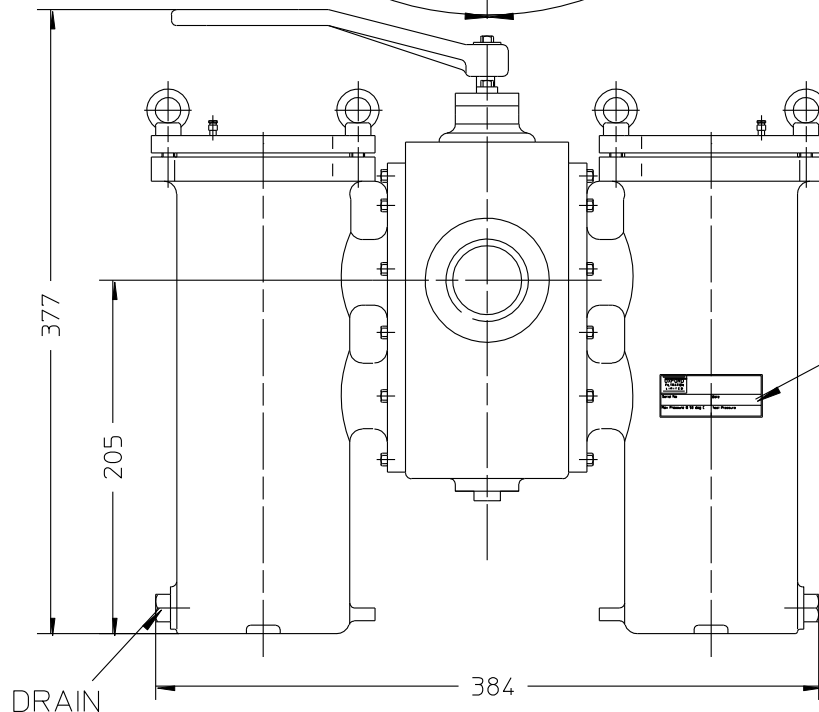
DN 32 (1.25") MAYBE ACHIEVED BY ADAPTORS
IN DN40 (1.5) TAPPING

INFORMATION LABEL



MAX WORKING PRESSURE
TEST PRESSURE

- Limited by Material & flange rating
- 21 bar



DRAIN

384

ALL DIMENSIONS NOMINAL

UNLESS SPECIFIED GENERAL TOLERANCE 0 DEC PLACE +/- 1 1 DEC PLACE +/- 0.4 2 DEC PLACE +/- 1.0 ANGULAR +/- 2 Deg	APPROVED	MATERIAL	DESCRIPTION	
	DRAWN A.S.N.	OXFORD FILTRATION LIMITED	GENERAL ARRANGEMENT DN32-40 Threaded Dual Filter	
MODIFICATION	DATE 19/12/14	C 2014 This drawing and the design is the property of OXFORD FILTRATION LIMITED and may not be copied or used for any purpose other than that for which it was supplied unless expressly stated in writing	DRG NO. 12525	ISS 1