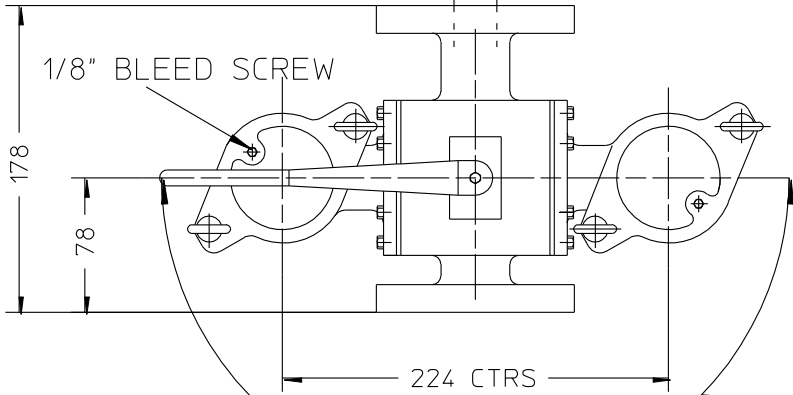


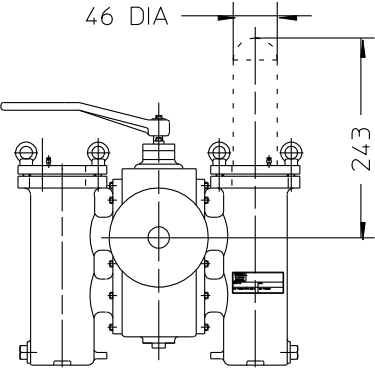
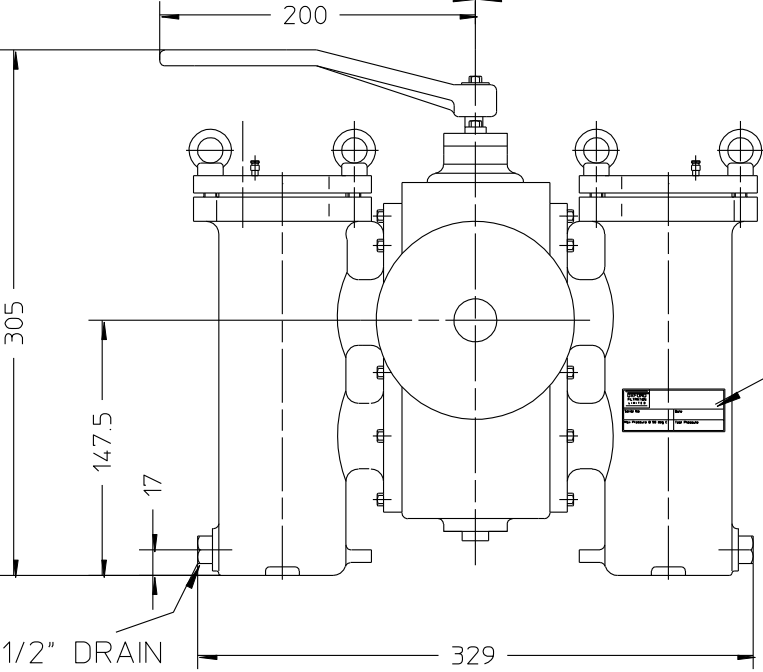


DN 25 (1")  
BORE



↑ FLOW

HANDLE SWING



SPACE TO REMOVE ELEMENT

FLANGE TYPE REQUIREMENT	
P.C.D OF HOLES	
DIA OF R/F	
R/F THICKNESS	
NO OF HOLES	
DIA OF HOLES	

INFORMATION LABEL



- WEIGHT OF FILTER
- 21 kg
- MAX WORKING PRESSURE
- Limited by Material & flange rating
- TEST PRESSURE
- 21 bar

ALL DIMENSIONS NOMINAL

UNLESS SPECIFIED GENERAL TOLERANCE 0 DEC PLACE +/- 1 1 DEC PLACE +/- 0.4 2 DEC PLACE +/- 1.0 ANGULAR +/- 2 Deg	APPROVED	MATERIAL	DESCRIPTION <b>GENERAL ARRANGEMENT</b> <b>DN25 Flg Dual Filter</b>	
	DRAWN <b>A.S.N.</b>	<b>OXFORD FILTRATION LIMITED</b>		
MODIFICATION WT & V/DRAIN INFO. ADDED	DATE <b>25/08/13</b>	© 2013 This drawing and the design is the property of OXFORD FILTRATION LIMITED and may not be copied or used for any purpose other than that for which it was supplied unless expressly stated in writing	DRG NO. <b>12524</b>	ISS <b>3</b>