



ELF-A Filter housing

Accepts 9.65cm(4") Double Open End Filter Cartridges

- Operating pressure up to 8 bar permits use in a wide range of applications
- Light weight die-cast aluminum for corrosion resistance
- In-line inlet and outlet connections for easy installation
- Optional mounting brackets available

Specifications

Design Pressure	8 bar
Materials	Head ZL102
	Bowl ZL102
Connections	Inlet/Outlet 3/8" NPT , BSP
	Drain 1/4" NPT , BSP
Seal Materials	Buna, EPDM, Si.Rubber

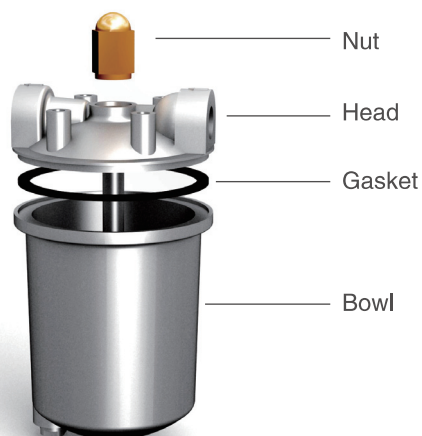
Flow Rates

Viscosity	Water	80SSU	150SSU	300SSU	600SSU	1000SSU
Flow rates (GPM)	6	5	4.5	4	3.5	3

*Remember to consider the amount of contaminant to be removed when selecting a filter.



Brisbane, Australia
www.monarchindustrial.com.au
www.monarchasiapacific.com.au



Application

- Pump seal
- Lube oil
- OEM placement



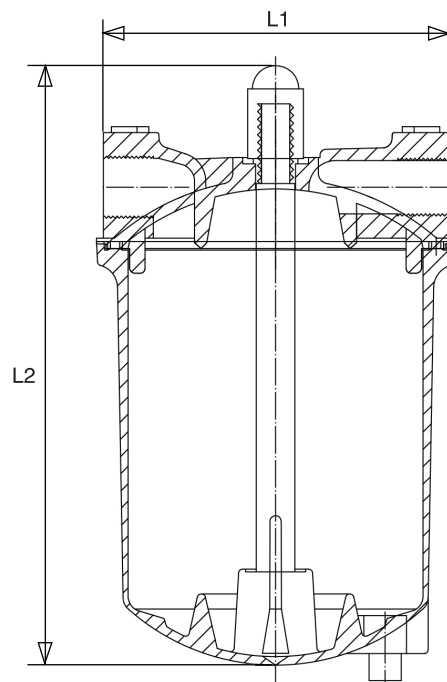
ELF-A Filter housing

Dimensions

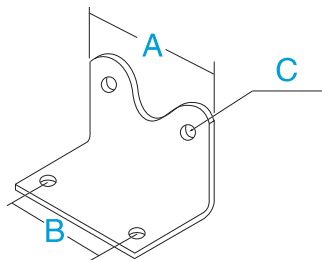
Model	Cartridge Length	L1 (mm)	L2 (mm)	Weight Empty (kg)
EALCL4***	4"	88	155	0.8

Cartridge Connection

7 – Double Open End



Optional Mounting Bracket



A (mm)	B (mm)	C (mm)
50	38	Φ8

Code

EALC	L	4	7	N	8	9	B
Model	Material	EL.Length	EL.Connection	Conn.Type	Press.Class	Inlet/Outlet Size	Seal Materials
A-A series	L – ZL102	4 – 4"	7 – DOE	N – NPT B – BSP	8 – 8bar	9 – 3/8"	B – Buna E – EPDM S – Si . Rubber

e.g. EALCL47N89B

Brisbane, Australia
www.monarchindustrial.com.au
www.monarchasiapacific.com.au