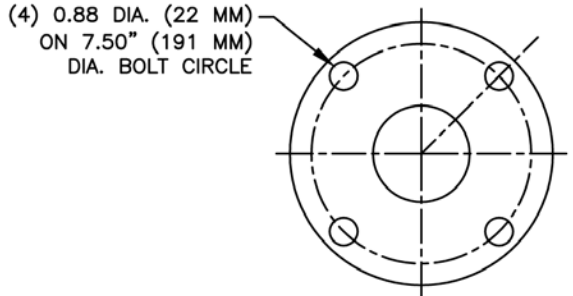


NO.	PART NAME	MATERIAL
1	VENT VALVE	GLASS-FILLED PPL
2	COVER	GLASS-FILLED PPL
3	BODY	GLASS-FILLED PPL
4	BASKET	GLASS-FILLED PPL
5	FLANGE ADAPTER	2" CL. 150 PPL
6	PLUG	GLASS-FILLED PPL
7	O-RING	VITON
8	BAG RETAINER	GLASS-FILLED PPL
9	O-RING	VITON

- NOTES:
- PRESSURE RATING: 150 PSI @ 70° F (NON SHOCK) (10.3 BAR @ 21° C)
  - VENT GAUGE AND DIFFERENTIAL PRESSURE GAUGE ARE OPTIONAL.
  - INLET CONNECTION: 2" (50mm) FLANGE  
OUTLET/DRAIN CONNECTION: 2" (50mm) FLANGE
  - BAG SIZES:  
BAG #1-SINGLE LENGTH (FITS 210102F00)  
7" X 16" (2.0 SQ.FT.)  
178 MM X 406 MM (1858 SQ.CM.)  
BAG #2-DOUBLE LENGTH (FITS 210202F00)  
7" X 32" (4.1 SQ.FT.)  
178 MM X 813 MM (3809 SQ.CM.)
  - FOR METAL PIPING INSTALLATION, A MINIMUM OF 20" PLASTIC PIPE IS REQUIRED ON UPSTREAM AND DOWNSTREAM OF FILTER VESSEL.



CERTIFIED FOR:  
P.O. NO.:  
REG. NO.:  
QUOTE NO.:  
TAG NO.:

PART NO.	A		B		C		D		E		F		G		H		WT. (DRY)	
	IN.	MM.	IN.	MM.	IN.	MM.	IN.	MM.	IN.	MM.	IN.	MM.	IN.	MM.	IN.	MM.	LBS.	KG.
FLT4201F	5.69	145	10	254	3.25	83	34.12	867	20	508	18.38	467	8.63	219	23.88	607	53	24
FLT4202F	5.69	145	10	254	3.25	83	50.12	1273	36	914	18.38	467	8.63	219	39.88	1013	66	30

Monarch Group - Filters, Strainers & Pipeline Equipment  
Australia - www.monarchindustrial.com.au  
Thailand - www.psfthailand.com

**FATON**

NAME: POLYLINE BAG FILTER  
FLANGE CONNECTION  
SIZE 2" POLYPROPYLENE

DRAWN FM DATE 10/4/96 CERT. LF DATE 10/4/96

SIZE A DWG NO SD02100F REV D

UNAUTHORIZED USE, MANUFACTURE OR REPRODUCTION IN WHOLE OR IN PART IS PROHIBITED.

ELECTRONIC FILE NAME: SD02100F.DWG

REF. ECR D507 DATE 1/30/06